

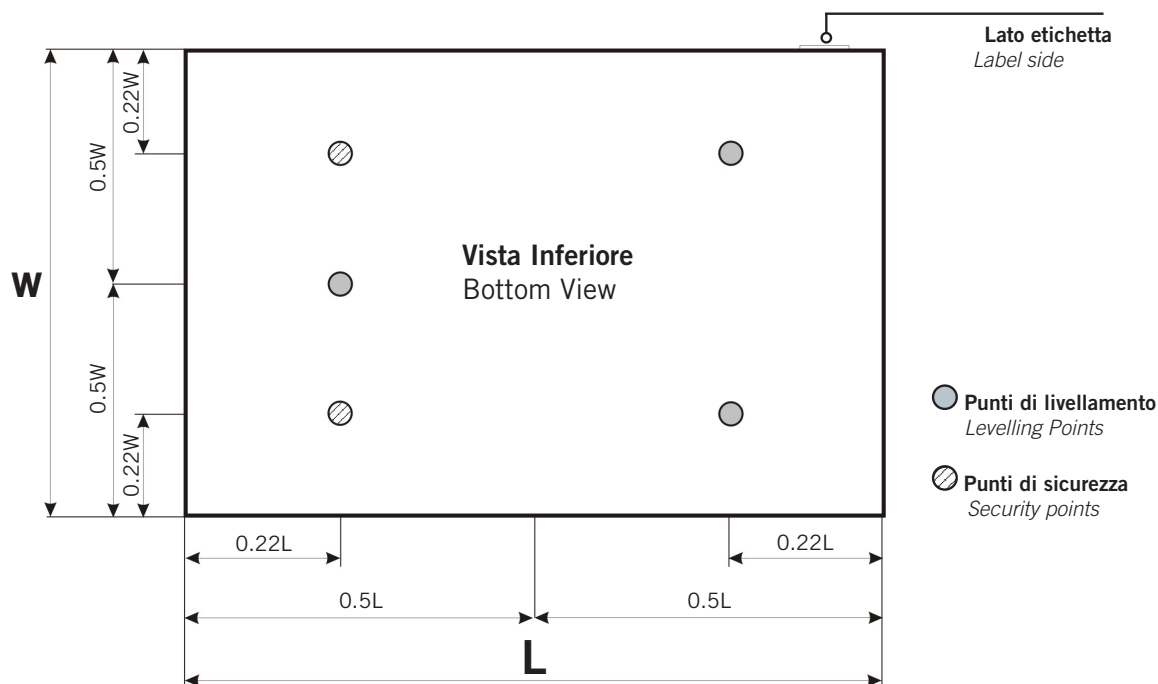
# PUNTI DI APPOGGIO

## SUPPORT POINTS

### TN / TC / TA / DS

Il piano di riscontro deve essere posizionato, a secondo delle dimensioni, su dei piedini di regolazione, su colonnine di sostegno oppure su un supporto in acciaio saldato che rispetti lo schema dei punti d'appoggio di seguito riportato.

*The surface plate must be positioned, according to the dimensions, on leveling and adjustment feet, on support columns or on a welded steel support which respects the schema of the support points shown here below.*

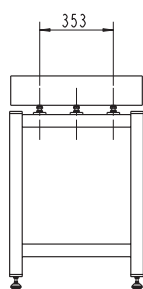
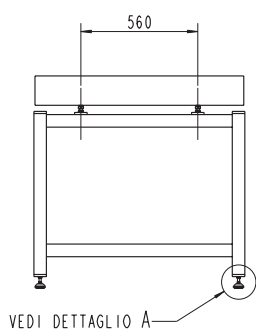


## COMPARAZIONE TRA SUPPORTI

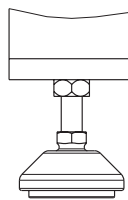
### SUPPORT COMPARISON

### TN / TC / TA / DS

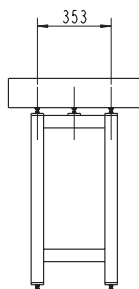
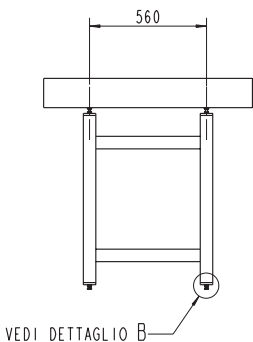
TN



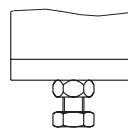
DETTAGLIO A  
SCALA 0.500



DS



DETTAGLIO B  
SCALA 0.500



Comparazione tra i supporti TN e DS per piano da 1000x630 mm. I due supporti, pur mantenendo gli stessi punti di appoggio, prevedono dimensioni d'ingombro e kit di viteria diversi.

*Comparison between TN and DS support for plate 1000x630 mm. The two support, while maintaining the same adjusting points, provide different overall dimensions and screw kits.*